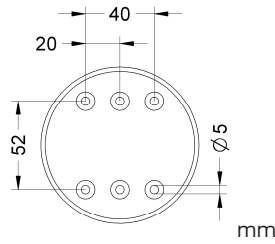
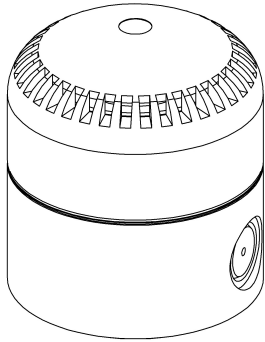
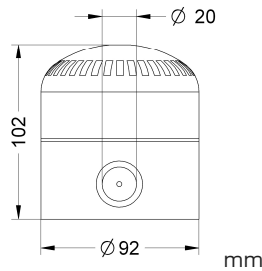


INSTALLATIONS UND BEDIENUNGSANLEITUNG
INSTALLATION AND APPLICATION INSTRUCTIONS - INSTRUCTIONS D'INSTALLATION ET D'UTILISATION
INSTRUCCIONES DE INSTALACIÓN Y EMPLEO - ISTRUZIONI DI INSTALLAZIONE E UTILIZZO



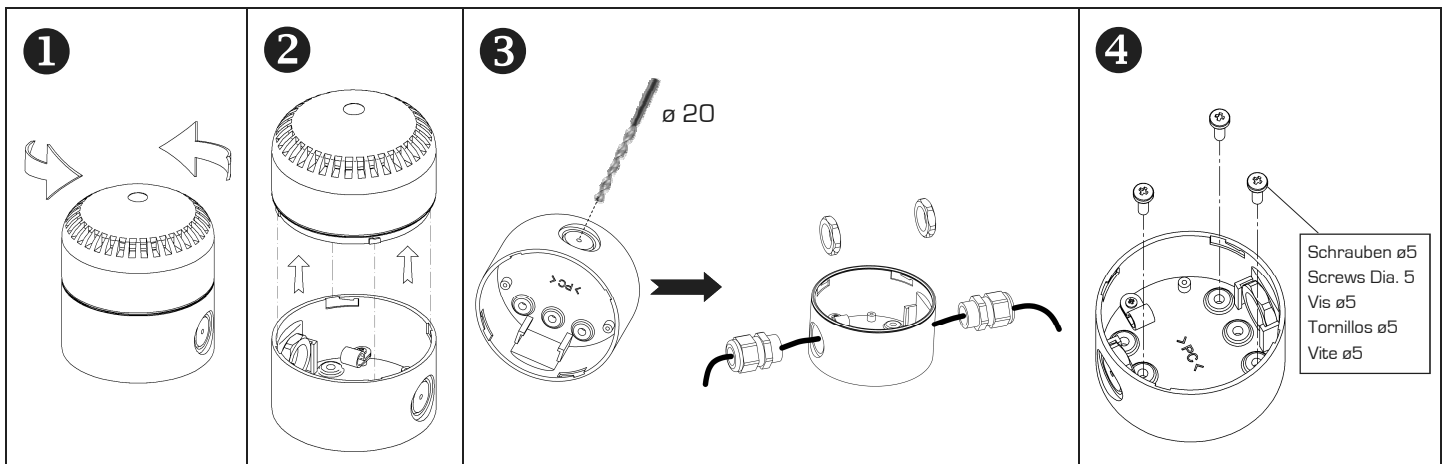
SIR 8901RT - SIR 8902WS

V \sim	12÷24	
mA	170	155
dB(A)1m	80 ÷ 100	

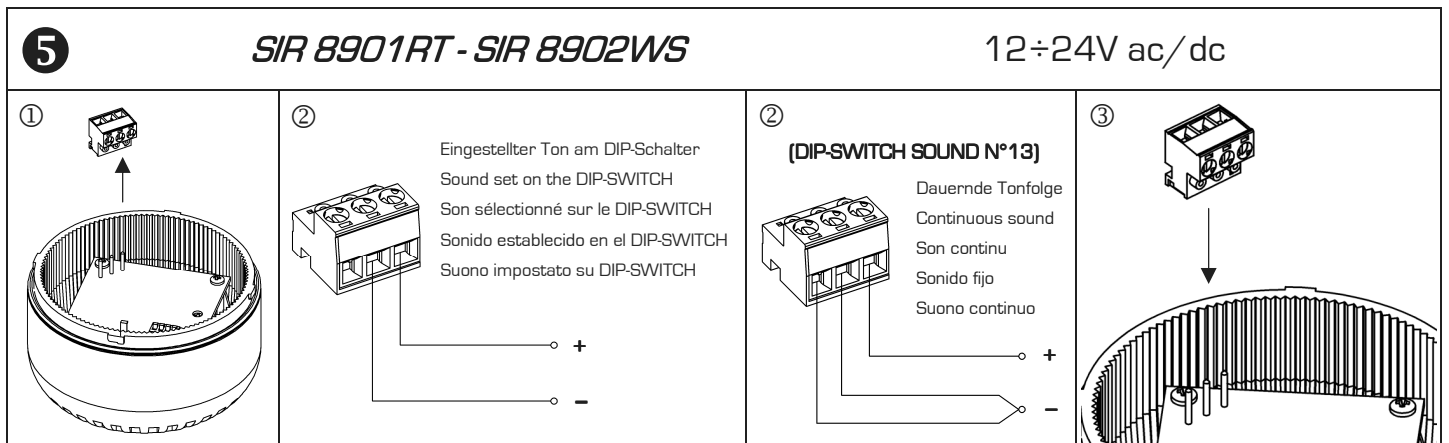


SIR 8903RT - SIR 8904WS

V \sim	90÷240	
mA	35	25
dB(A)1m	80 ÷ 100	



SCHUTZSICHERUNG	Für die Zuleitung träge Sicherungen verwenden, die nach der Spannung zu bemessen sind
FUSE WIRE PROTECTION	On the power supply line the rating of the supply fuse must be according to the voltage
FUSIBLE DE PROTECTION	Sur la ligne d'alimentation utiliser des fusibles retardés dimensionnés selon la tension
FUSIBLE DE PROTECCIÓN	En la línea de alimentación emplear fusibles de seguridad adecuados al voltaje
FUSIBILE DI PROTEZIONE	Sulla linea di alimentazione utilizzare fusibili ritardati dimensionati a seconda della tensione



5

SIR 8903RT - SIR 8904WS

90÷240V ac

①

②

③

Eingestellter Ton am DIP-Schalter
Sound set on the DIP-SWITCH
Son sélectionné sur le DIP-SWITCH
Sonido establecido en el DIP-SWITCH
Suono impostato su DIP-SWITCH

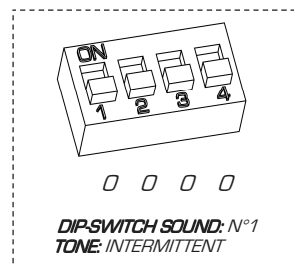
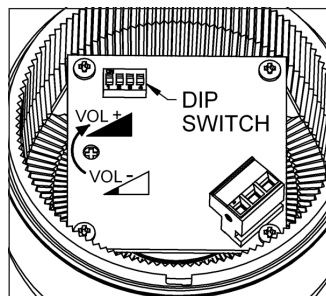
③

(DIP-SWITCH SOUND N°13)

Dauernde Tonfolge
Continuous sound
Son continu
Sonido fijo
Suono continuo

⑥

⑦



DIP-SWITCH SOUNDS						
N°	TONE	TONE TYPE	F(Hz)	TIMES	DESCRIPTION	DIP-SWITCH
1	INTERMITTENT	-----	490	0.5s ON/1s OFF	GENERAL PURPOSE - WARNING	0 0 0 0
2	BI-TONE	▬▬▬▬	490 - 610	0.5s/0.5s	GENERAL PURPOSE - EVACUATION 1	1 0 0 0
3	LINEAR	————	610	-	GENERAL PURPOSE - EVACUATION 2	0 1 0 0
4	SWEEP	▬▬▬▬	2400 - 2800	CICLE 0,15s	FIRE WARNING	1 1 0 0
5	SWEEP	▬▬▬▬	1200 - 500	CICLE 1s	DIN 33 404	0 0 1 0
6	SWEEP	▬▬▬▬	500 - 1200	3.5s ON/0.5s OFF	NETHERLANDS - NEN2575:2000	1 0 1 0
7	BI-TONE	▬▬▬▬	554 - 440	0.1s/0.4s	FRANCE - AFNOR NF S 32 001	0 1 1 0
8	SWEEP	▬▬▬▬	800 - 970	CICLE 1.5s	BS5839-1:2002	1 1 1 0
9	BI-TONE	▬▬▬▬	510 - 610	0,25s/0,25s	BS FIRE SQUASH	0 0 0 1
10	BI-TONE	▬▬▬▬	990 - 650	0,25s/0,25s	BS FIRE SINFONY	1 0 0 1
11	SWEEP	▬▬▬▬	500 - 1200	2 ON 1 OFF	AUSTRALIA AS4428	0 1 0 1
12	SWEEP	▬▬▬▬	500 - 1200	0.5s ON/0.5s OFF X 3 1.5 s OFF	AUSTRALIA AS1670	1 1 0 1
13	LINEAR	————	970	-	PFER TOXIC GAS WARNING	see 5